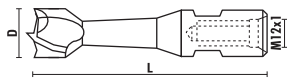


PUNTE PER SERRATURE HW/SP Z=2

ART. S122 - S222

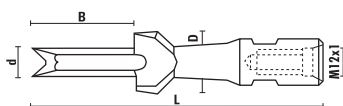


- Per esecuzione foro

Rotaz. DX	D	L	Mat.
S122.180.R	18	100	HW
S122.200.R	20	100	HW
S222.180.R	18	100	SP
S222.200.R	20	100	SP

PUNTE PER SERRATURE HW/SP Z=2

ART. S123 - S223

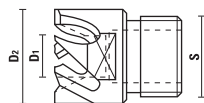


Per esecuzione asola e foro

Rotaz. DX	d	D	B	L	Mat.
S123.110.R	11	19	62	155	HW
S123.120.R	12	19	62	155	HW
S223.110.R	11	19	62	155	SP
S223.120.R	12	19	62	155	SP

FRESE PER TRAFILA HS

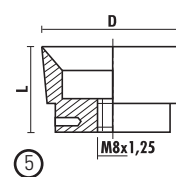
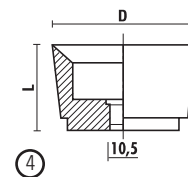
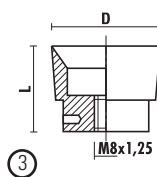
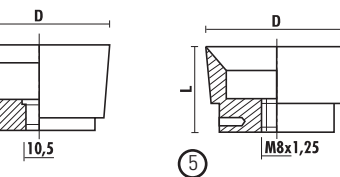
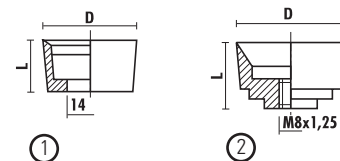
ART. S250



Rotaz. DX	D1	D2	Z	S
S250.080.R	8	25	4	21/14x1"
S250.082.R	8,2	25	4	21/14x1"
S250.100.R	10	25	4	21/14x1"
S250.102.R	10,2	25	4	21/14x1"
S250.120.R	12	25	4	21/14x1"
S250.122.R	12,2	25	4	21/14x1"
S250.162.R	16,2	32	5	26/14x1"

BICCHIERINI HS PER TORNIO COPIATIVO

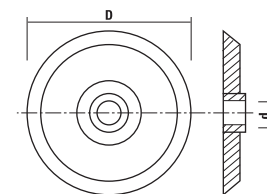
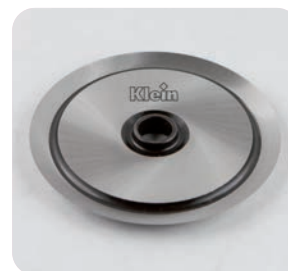
ART. S260



Articolo	Disegno	D	L
S260.320.N	1	32	15
S260.350.N	2	35	20
S260.360.N	3	36	26
S260.400.N	4	40	25
S260.450.N	5	45	26

PIATTELLI HS PER TORNIO COPIATIVO

ART. S270



Articolo	D	d
S270.750.N	75	10,3