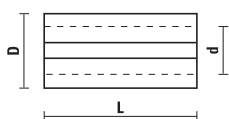


BUSSOLE DI MAGGIORAZIONE

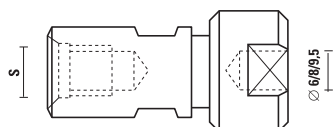
ART. Z001



Articolo	D	d	L
Z001.001.N	8	6	25
Z001.002.N	9,5	6	25
Z001.003.N	9,5	8	25
Z001.004.N	10	8	25
Z001.005.N	12	8	25
Z001.006.N	12	6	25
Z001.007.N	12	10	25
Z001.008.N	16	13	40
Z001.009.N	8	6,4	25
Z001.010.N	12	9,5	25
Z001.011.N	10	6	25
Z001.012.N	8	5	25
Z001.013.N	8	4	25
Z001.014.N	8	3	25
Z001.015.N	10	5	25
Z001.016.N	10	4	25
Z001.017.N	9,5	6,4	25
Z001.018.N	12,7	9,5	25
Z001.019.N	12,7	8	25
Z001.020.N	12,7	6,4	25

MANDRINI PORTAPINZE CON PINZE 6 - 8 - 9,5

ART. Z002



Viene fornito completo di 3 pinze Ø6 - Ø8 - Ø9,5

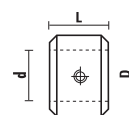
Articolo	S
Z002.001.R	M12x1 (kit completo di pinze)
Z002.002.R	M10x1,5 (kit completo di pinze)

RICAMBI

Z002.101.R mandrino senza pinze	M12x1
Z002.102.R mandrino senza pinze	M10x1,5
Z002.160.R	pinza Ø6
Z002.180.R	pinza Ø8
Z002.195.R	pinza Ø9,5

ANELLI DI BATTUTA

ART. Z003



Anelli limitatori della profondità di foratura da usarsi su Art. R101 - R201 - R 205

Articolo	d	D	L
Z003.050.N	5	16	10
Z003.060.N	6	16	10
Z003.070.N	7	18	10
Z003.080.N	8	18	10
Z003.090.N	9	20	10
Z003.100.N	10	20	10
Z003.120.N	12	22	10



Z051.301.R



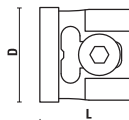
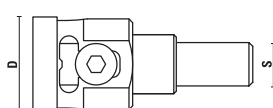
Z052.006.N



1



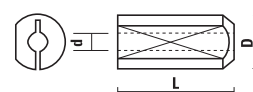
2



Articolo	D	Dis
Z003.900.N NEW	32	1
Z003.905.N NEW	25	2

BUSSOLE PORTA PUNTA

ART. Z010



Da utilizzare con Art. L120



Articolo	d	D	L
Z010.020.N	2	10	24
Z010.025.N	2,5	10	24
Z010.030.N	3	10	24
Z010.032.N	3,2	10	24
Z010.035.N	3,5	10	24
Z010.040.N	4	10	24
Z010.045.N	4,5	10	24
Z010.050.N	5	10	24
Z010.060.N	6	10	24