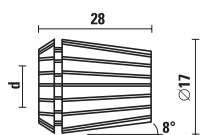


PINZE ER 16 - DIN 6499

ART. T127

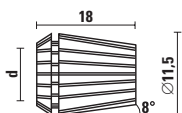


Precisione= 0,01

Articolo	d
T127.016.N	∅ 1,59 (1/16")
T127.020.N	∅ 2 - 1
T127.030.N	∅ 3 - 2
T127.032.N	∅ 3,2 (1/8")
T127.040.N	∅ 4 - 3
T127.050.N	∅ 5 - 4
T127.060.N	∅ 6 - 5
T127.064.N	∅ 6,4 (1/4")
T127.070.N	∅ 7 - 6
T127.080.N	∅ 8 - 7
T127.090.N	∅ 9 - 8
T127.095.N	∅ 9,5 (3/8")
T127.100.N	∅ 10 - 9

PINZE ER 11 - DIN 6499

ART. T129

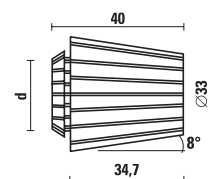


Precisione= 0,01

Articolo/Item	d
T129.010.N	∅ 1-0,5
T129.015.N	∅ 1,5-1
T129.020.N	∅ 2-1,5
T129.025.N	∅ 2,5-2
T129.030.N	∅ 3-2,5
T129.032.N	∅ 3,2 (1/8")
T129.035.N	∅ 3,5-3
T129.040.N	∅ 4-3,5
T129.045.N	∅ 4,5-4
T129.048.N	∅ 4,8 (3/16")
T129.050.N	∅ 5-4,5
T129.055.N	∅ 5,5-5
T129.060.N	∅ 6-5,5
T129.064.N	∅ 6,4 (1/4")
T129.065.N	∅ 6,5-6
T129.070.N	∅ 7-6,5

PINZE ETS 32 - DIN 6499

ART. T134

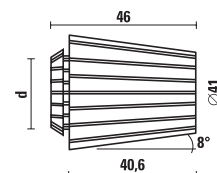
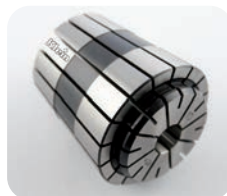


Precisione= 0,01

Articolo	d
T134.030.N	∅ 3 - 2
T134.040.N	∅ 4 - 3
T134.050.N	∅ 5 - 4
T134.060.N	∅ 6 - 5
T134.070.N	∅ 7 - 6
T134.080.N	∅ 8 - 7
T134.100.N	∅ 10 - 9
T134.120.N	∅ 12 - 11
T134.130.N	∅ 13 - 12
T134.140.N	∅ 14 - 13
T134.160.N	∅ 16 - 15
T134.180.N	∅ 18 - 17
T134.200.N	∅ 20 - 19

PINZE ETS 40 - DIN 6499

ART. T135

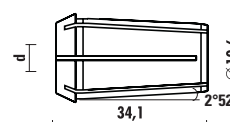


Precisione= 0,01

Articolo	d
T135.040.N	∅ 4 - 3
T135.050.N	∅ 5 - 4
T135.060.N	∅ 6 - 5
T135.070.N	∅ 7 - 6
T135.080.N	∅ 8 - 7
T135.100.N	∅ 10 - 9
T135.120.N	∅ 12 - 11
T135.130.N	∅ 13 - 12
T135.140.N	∅ 14 - 13
T135.160.N	∅ 16 - 15
T135.180.N	∅ 18 - 17
T135.200.N	∅ 20 - 19
T135.250.N	∅ 25 - 24

PINZE EOC12 - DIN 6388 (407E)

ART. T136



- Si utilizzano su Art. T118.580.R
- Precisione= 0,01

Articolo	d
T136.040.N	∅ 4 - 3
T136.060.N	∅ 6 - 5
T136.064.N	∅ 6,4 (1/4")
T136.080.N	∅ 8 - 7
T136.095.N	∅ 9,5 (3/8")
T136.100.N	∅ 10 - 9
T136.120.N	∅ 12 - 11
T136.127.N	∅ 12,7 (1/2")