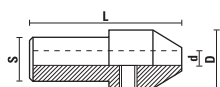


MANDRINI PORTA PUNTA

ART. Z011



Da utilizzare con Art. L120



Articolo	d	D	L	S
Z011.020.N	2	15	35	10x19
Z011.025.N	2,5	15	35	10x19
Z011.030.N	3	15	35	10x19
Z011.032.N	3,2	15	35	10x19
Z011.035.N	3,5	15	35	10x19
Z011.040.N	4	15	35	10x19
Z011.045.N	4,5	15	35	10x19
Z011.050.N	5	15	35	10x19
Z011.060.N	6	15	35	10x19



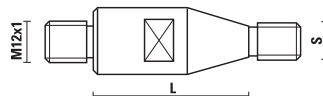
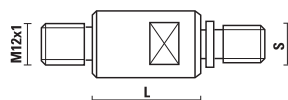
Z051.311.R



Z052.102.N

ATTACCHI

ART. Z021

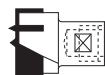
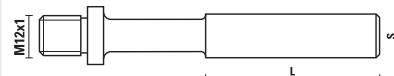


Da utilizzare con Art. R130

Rotaz DX	Rotaz SX	S	L
Z021.025.R	Z021.025.L	M10/11	25
Z021.035.R	Z021.035.L	M10/11	35
Z021.045.R	Z021.045.L	M10/11	45
Z021.125.R	Z021.125.L	M10/30°	25
Z021.135.R	Z021.135.L	M10/30°	35
Z021.145.R	Z021.145.L	M10/30°	45

ATTACCHI

ART. Z021

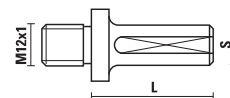


Da utilizzare con Art. R130
e Art. F101 - F103 - F104 - F105 - F202 - F203 - F204

Rotaz DX	Rotaz SX	S	L
Z021.213.R	Z021.213.L	13	50
Z021.216.R	Z021.216.L	16	50

ADATTATORI Ø10 PER FORATRICI

ART. Z021

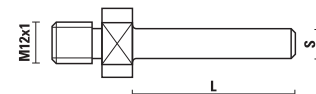


Da utilizzare con Art. R130

Rotaz DX	Rotaz SX	S	L
Z021.310.R	Z021.310.L	10	27
Z021.311.R	Z021.311.L	10	40
Z021.312.R	Z021.312.L	10	47

ADATTATORI PER PANTOGRAFI

ART. Z021



Da utilizzare con Art. R130
e Art. F101 - F103 - F104 - F105 - F202 - F203 - F204

Rotaz DX	S	L
Z021.406.R	6	40
Z021.408.R	8	40
Z021.409.R	9,5	40
Z021.410.R	10	40
Z021.412.R	12	40