

classic  
circular saws  
sc 3c  
sc 2c



		sc 3c	sc 2c
Max. saw blade diameter with scoring blade installed	mm	315	315
90°/45° max. saw blade projection from table	mm	100 / 79	100 / 79
Cutting width on parallel fence	mm	900 ÷ 1270	900 ÷ 1270
Squaring stroke	mm	2310 ÷ 2660	1660
Three-phase motors starting from	kW/Hz	5 (6) / 50 (60)	4 (4,8) / 50 (60)

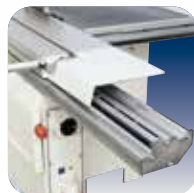
*Find the complete technical specification at page 18*



**Saw Unit**  
performance without limits



**Digital Readout**  
high-tech devices



**Sliding Table**  
exclusive



**SCM  
Thundercut**  
Optimizer/  
Sequencer App

Compact and highly precise solutions with a low investment for DIY woodworkers and craftsmen.

# classic operating groups



The new **scoring unit** can be supplied on request and **can easily be adjusted from outside the machine.**

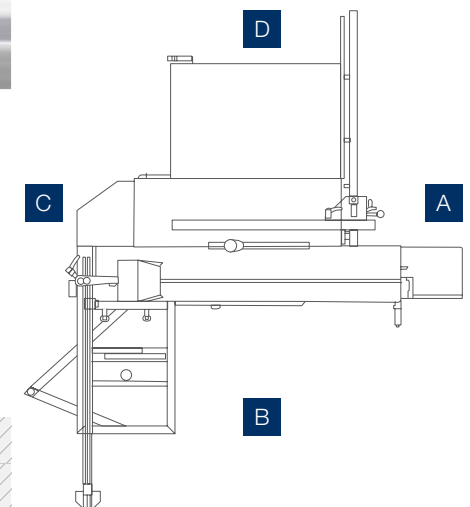
A clean machine environment facilitates maintenance avoiding mechanical breakdowns of the units and improving the machine's precision and reliability over time. Very high effective saw unit exhaust hood: the tests carried out by Scm's studies highlighted a **maximum dust emission level 90% lower with respect to the maximum level allowed by the European safety regulations!**

Machining	Maximum value according to the CE norms	Position A	Position B	Position C	Position D
Strips cut	2 mg/m <sup>3</sup>	0.08 mg/m <sup>3</sup>	0.10 mg/m <sup>3</sup>	0.04 mg/m <sup>3</sup>	0.16 mg/m <sup>3</sup>

performance without limits

## Saw Unit.

Incredible cutting of both very thick solid wood and panels, even those veneered, thanks to the new saw unit with a blade that has a maximum **diameter of 315 mm with the scoring blade installed.**





exclusive

#### Sliding Table.

Easier and more precise cutting is possible due to a perfectly stable support that is guaranteed, even for large work pieces, by the **wide sliding table** and the **large squaring frame fence provided as standard**. **Top quality precision, smooth and silent action, self-cleaning dustproof system, long lasting accuracy, no adjustments required.** The sliding table is made of extruded anodized aluminum with a closed honeycomb structure. The sliding table runs on an exclusive slide way system consisting of calibrated and hardened F550 SX steel guides.

maximum performance as standard

#### Squaring Frame and Fence.

The **sc 2c** squaring frame (A) is complete with a telescopic fence with a retractable stop. The other classic machines (B) are equipped with a **large squaring frame (960 x 600 mm)** complete with:

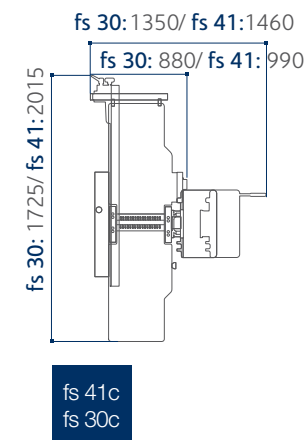
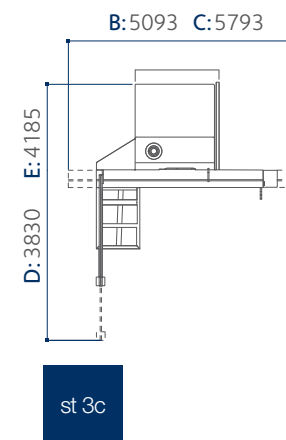
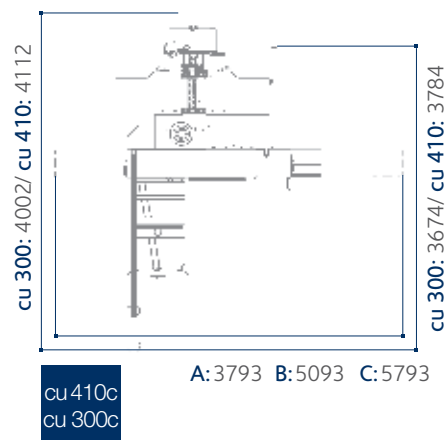
- telescopic fence with 2 flip-over stops
- eccentric clamp
- telescopic swinging arm support

**cu 300c** and **cu 410c** are equipped with a saw-planer multifunction fence, designed to be easily positioned and removed to allow **rapid work changeover**.

Precise and rapid positioning with the parallel fence with a **round sliding bar**, in rectified steel and complete with "high rigidity" cast iron support, standard for all the other Classic machines. (see picture)



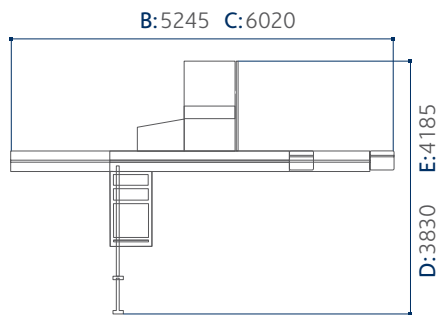
# classic dimensions and technical data



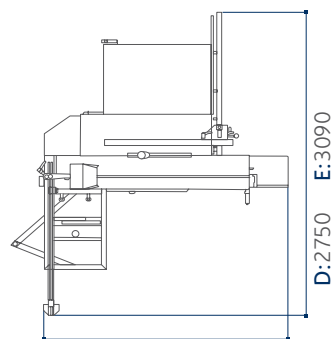
- A** with wagon 1600 mm
  - B** with wagon 2250 mm
  - C** with wagon 2600 mm
  - D** with 900 mm cutting width\*
  - E** with 1270 mm cutting width\*
- \*at the parallel fence

	cu 410c	cu 300c
<b>planer</b>		
Working width	mm 410	300
Cutter block diameter (mm)/no. of standard knives	mm/n. 72 / 3	72 / 3
Dimensions of standard knives	mm 410 x 30 x 3	300 x 30 x 3
Max. stock removal	mm 4	4
Surfacing tables total length	mm 1800	1510
Thickening table dimensions	mm 410 x 605	300 x 585
Feed speed on thickener	m/min 7	7
Min. ÷ max. working height on thickener	mm 3 ÷ 230	3 ÷ 230
<b>circular saw</b>		
Cast iron saw-spindle moulder worktable dimensions	mm 1115 x 335	1115 x 335
Saw blade tilting	90° ÷ 45°	90° ÷ 45°
Max. saw blade diameter with scoring blade installed	mm 315	315
Max. saw blade projection from table at 90°/45°	mm 100 / 79	100 / 79
Squaring stroke	mm 1660 ÷ 2660	1660 ÷ 2660
Cutting width on parallel fence	mm 900	820
<b>spindle moulder</b>		
Max. useful spindle length	mm 100	100
Spindle moulder speed (at 50 Hz)	rpm 3500 / 7000 / 10.000	3500 / 7000 / 10.000
Max. tool diameter when profiling	mm 210	210
Max. diameter of tool lowered under the table at 90°	mm 180	180
Max. tool diameter when tenoning	mm 275	275
<b>other technical features</b>		
Three-phase motors 4 kW (5,5 hp) 50 Hz - 4,8 kW (6,5 hp) 60 Hz	-	-
Three-phase motors 5 kW (6,6 hp) 50 Hz - 6 kW (8 hp) 60 Hz	S	S
Single-phase motors 2,2 kW (3 hp) 50 Hz	O	O
Single-phase motors S1 3,6 kW (4,8 hp) 60 Hz	O	O
Exhaust outlets diameter	mm 120	120

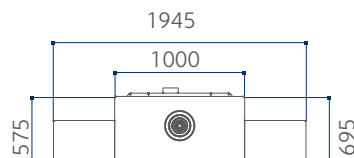
- S** Standard
- O** Option



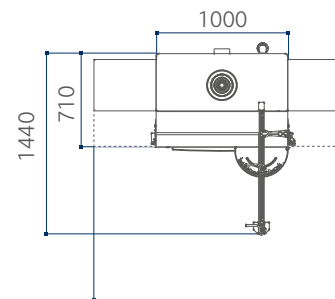
sc 3c



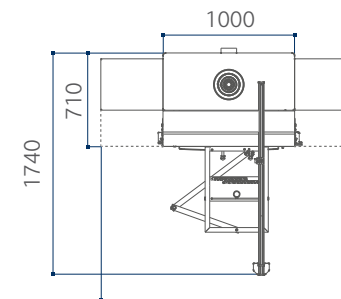
sc 2c



t 45c



tw 45c



tw 45c

2200  
with support  
frame

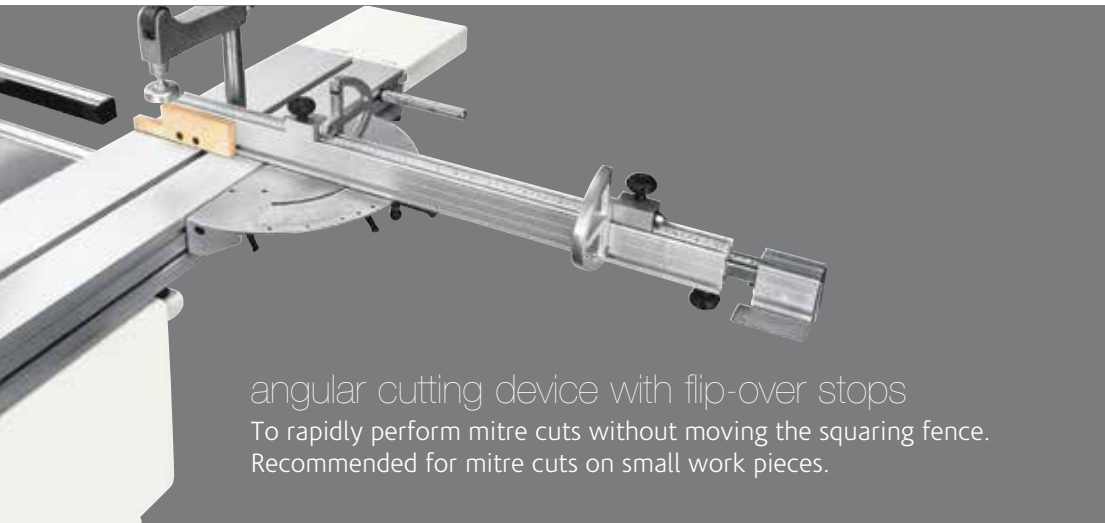
st 3c	fs 41c	fs 30c	sc 3c	sc 2c	tw 45c	t 45c
-	410	300	-	-	-	-
-	72 / 3	72 / 3	-	-	-	-
-	410 x 30 x 3	300 x 30 x 3	-	-	-	-
-	4	4	-	-	-	-
-	1800	1510	-	-	-	-
-	410 x 605	300 x 585	-	-	-	-
-	7	7	-	-	-	-
-	3 ÷ 230	3 ÷ 230	-	-	-	-
1115 x 430	-	-	840 x 560	1020 x 325	-	-
90° ÷ 45°	-	-	90° ÷ 45°	90° ÷ 45°	-	-
315	-	-	315	315	-	-
100 / 79	-	-	100 / 79	100 / 79	-	-
1660 ÷ 2660	-	-	2310 ÷ 2660	1660	-	-
900 ÷ 1270	-	-	900 ÷ 1270	900 ÷ 1270	-	-
100	-	-	-	-	100	100
3500 / 7000 / 10.000	-	-	-	-	3500 / 7000 / 10.000	3500 / 7000 / 10.000
210	-	-	-	-	210	210
180	-	-	-	-	180	180
275	-	-	-	-	275	-
-	S	S	-	S	-	-
S	O	O	S	O	S	S
O	O	O	O	O	O	O
O	O	O	O	O	O	O
120	120	120	120	120	120	120

classic  
main  
optional  
devices

tablet holder on the  
sliding carriage  
Compatible with tablets from 8" to 11".



angular cutting device with flip-over stops  
To rapidly perform mitre cuts without moving the squaring fence.  
Recommended for mitre cuts on small work pieces.



overhead blade protection  
For totally safe machining.

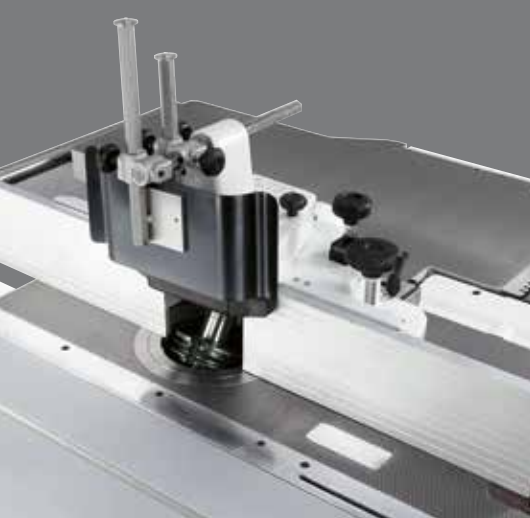


digital readout for  
the fence position on the parallel  
fence  
It allows precise  
positioning with the  
magnetic strip sensor.



professional  
fences unit  
For the saw and surfacing  
planer. Designed to be  
easy to remove and to  
allow a rapid changeover  
from one type of  
operation to another.





three movement adjustable spindle moulder fence  
 The spindle moulder fence can be easily removed and re-positioned without losing the working position, thanks to the memory system. The fence, besides, uses an adjustment system through rack and it has a mechanical readout. The maximum tool capacity during profiling is of 210 mm diameter.



A



B

interchangeable spindle (A)  
 For a very quick spindle substitution. Among the spare spindle, it is available also the spindle for router bits. (B)

tenoning table and protection hood  
 For the tenoning operations on the spindle moulder. It consists of:

- table
- protection hood for tools, 275 mm diameter
- exhaust hood, 120 mm diameter



electric pre-setting and flip over support for feeder  
 This solution allows a total exclusion of the device and prevents interference with other parts of the machine.



"minimax ease" mobile trolley for accessories  
 Designed to store various accessories such as: surfacing fence, squaring fence, spindle moulder fence, spindle shafts, etc.  
 It consists of:

- upper table with bakelite surface that can be used also with piece support during processing
- two shelves with rubber surface
- rotating wheels with locking device



additional table on the sliding carriage  
 For the support of large dimensioned panels.



# classic main optional devices

S Standard  
O Option

	cu 410c	cu 300c	st 3c	fs 41c	fs 30c	sc 3c	sc 2c	tw 45c	t 45c
"SCM Thundercut" Optimizer/Sequencer App	S	S	S	-	-	S	S	-	-
Tablet holder on the sliding carriage	O	O	O	-	-	O	O	-	-
Angular cutting device with flip-over stops	O	O	O	-	-	O	O	-	-
Digital readout for the fence position on the parallel fence	-	-	O	-	-	O	O	-	-
Additional table on the sliding carriage	O	O	O	-	-	O	O	-	-
Overhead blade protection	-	-	O	-	-	O	O	-	-
Professional guides unit	O	O	-	-	-	-	-	-	-
"Tersa" cutter block	O	O	-	O	O	-	-	-	-
"Xylent" spiralknife cutter block with 3 series of knives	O	O	-	O	O	-	-	-	-
Maintenance case for "Xylent" spiralknife	O	O	-	O	O	-	-	-	-
Cast iron mortiser	O	O	-	O	O	-	-	-	-
Self-centering chuck 0-16 mm "Wescott" type	O	O	-	O	O	-	-	-	-
Three movement adjustable spindle moulder fence	-	-	-	-	-	-	-	O	O
Tenoning table and protection hood	O	O	O	-	-	-	-	O	-
Electric pre-setting and flip over support for feeder	O	O	O	-	-	-	-	-	-
Interchangeable spindle	O	O	O	-	-	-	-	O	O
Wheels for machine movement	O	O	O	O	O	-	-	-	-
Dado set	O	O	-	-	-	O	-	-	-
Gravitational handwheel	O	O	-	O	O	-	-	-	-