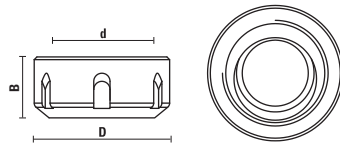


CLAMPING NUT WITH ECCENTRIC RING

ART. Z091

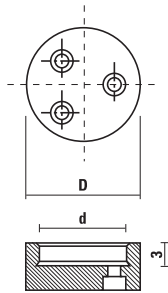


- To be used with our water-tight collets (Items T119/T123 NTS) at page 7.26 and stainless steel collet chucks at page 7.23 of our Catalog
 - Suitable when working with coolant

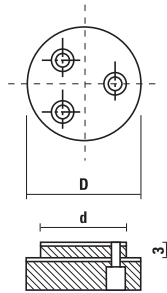
Item	Type	D	B	d	Rot.
Z091.051.R	DIN 6499 (ER 32)	50	23	M 40x1,5	RH
Z091.052.R	DIN 6499 (ER 40)	63	25	M 50x1,5	RH

END CAPS

ART. Z092



Hollow end cap (FF)



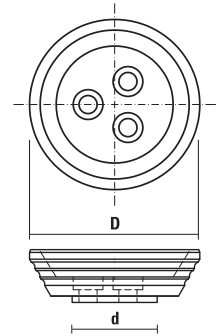
Extended end cap (FP)

Use on arbors Art. T128

Item	d	D	Type
Z092.001.R	30	40	FF
Z092.002.R	30	40	FP
Z092.003.R	35	50	FF
Z092.004.R	35	50	FP
Z092.005.R	40	50	FF
Z092.006.R	40	50	FP
Z092.007.R	25,4 (1")	50	FF
Z092.008.R	25,4 (1")	50	FP
Z092.009.R	31,75 (1/4")	50	FF
Z092.010.R	31,75 (1/4")	50	FP

LIFTING FLANGE FOR CUTTER ARBORS

ART. Z092

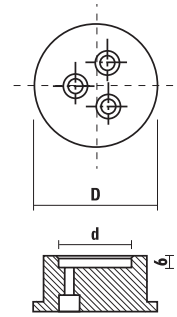


It mounts in place of the standard end cap to simplify the handling of heavy cutter stock

Item	d	D
Z092.030.N NEW	40	80

FIXING FLANGE FOR ART. T132.320.NS

ART. Z092



Hollow end cap (FF)

Use on arbors Art. T132.320.NS

Item	d	D	Type
Z092.050.R	40	80	FF