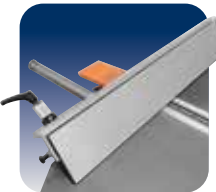
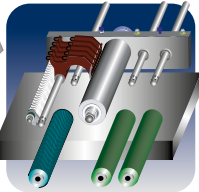


thicknessing planers  
nova s 630  
nova s 520



Surface Fence  
high rigidity



Interchangeable  
Rollers  
for every  
requirement



SCM Cutterblock  
simple and rapid

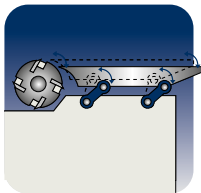
Perfect surfaces, practical  
and safe, ergonomics.

surfacing-thicknessing  
planers  
nova fs 520  
nova fs 410



		nova fs 520	nova fs 410
Working width	mm	520	410
Cutterblock diameter/standard knives	mm/n.	120/4	95/4
Total worktable length	mm	2250	2200
Min. ÷ max. working height on thicknesser	mm	3,5 ÷ 240	3,5 ÷ 240
Three-phase motors power starting from	kW/Hz	7 (8) / 50 (60)	5 (6) / 50 (60)

*Find the complete technical specification at page 36*



**Feeding on Connecting Rods**  
constant precision



**Thickening Table**  
rigidity and accuracy



**Surface Fence**  
high rigidity

Easy and rapid to use with great performance in a limited space.

# planers operating groups

## high rigidity Surface fence

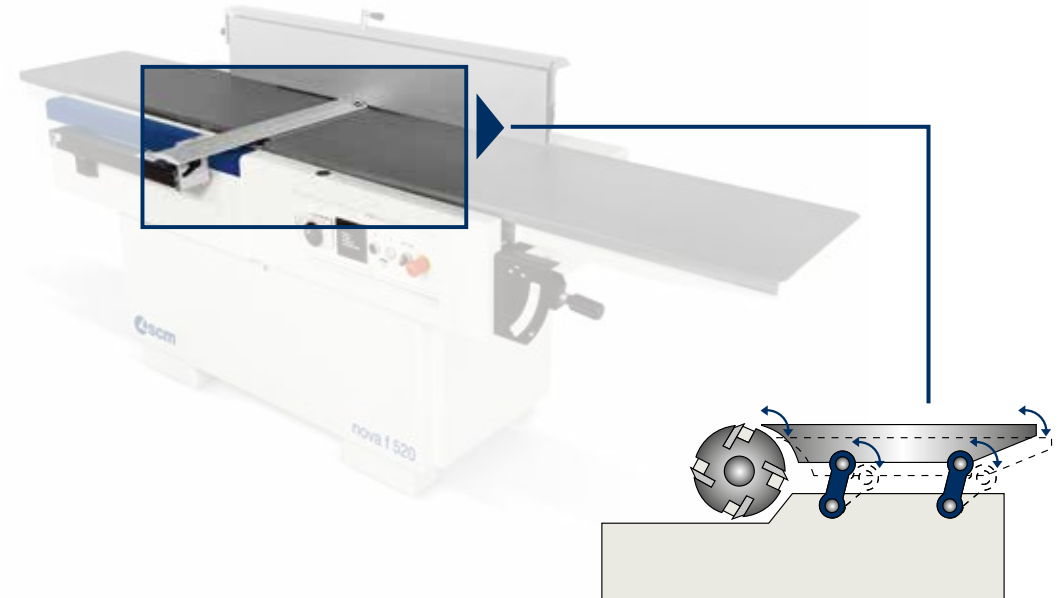
High rigid fence with a smooth movement thanks to the **central locking on round bar**. The graduated scale facilitates the operator in positioning the guide to the required tilting.



a guarantee of  
perfect planarity

## Simultaneous raising of the worktables

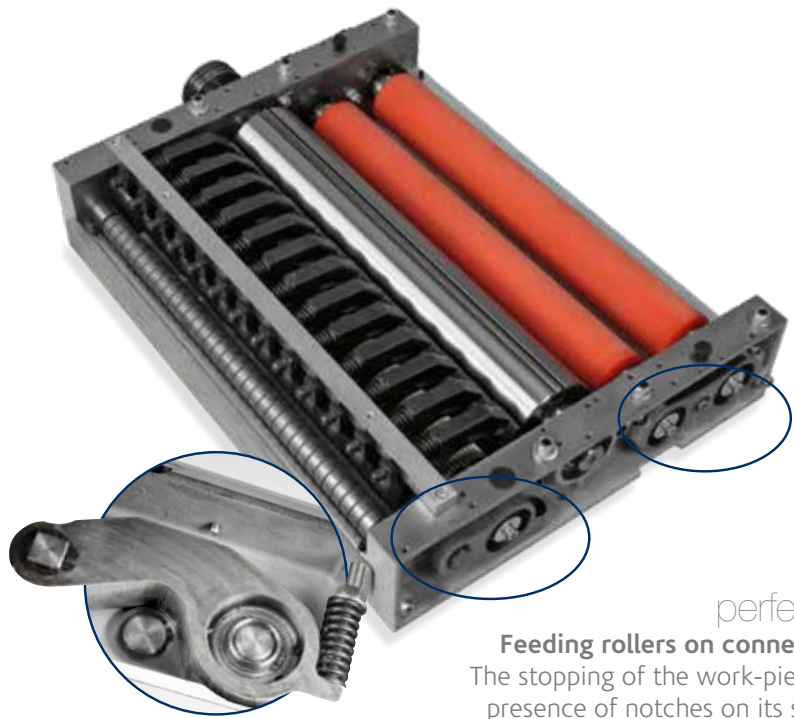
The system allows the **changeover from planer to thicknesser** with a single movement ensuring working rapidity and accuracy.



constant precision over time

## Feeding on connecting rods

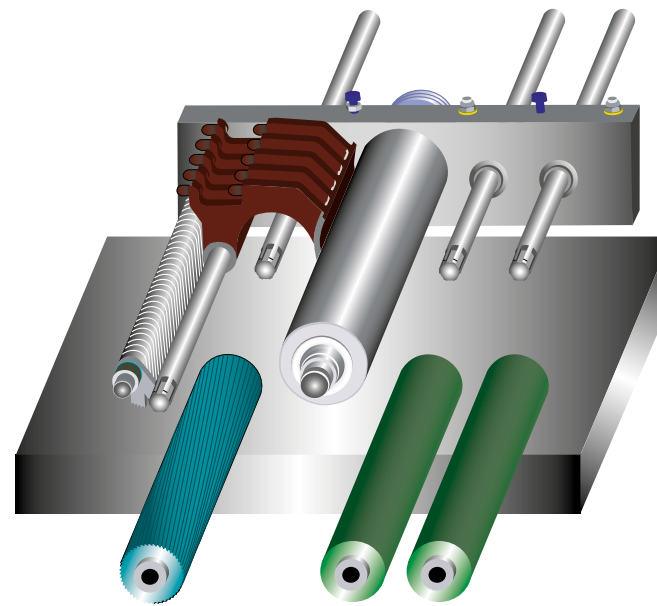
Very accurate machining with the movement of the infeed table by means of a parallelogram **kinetic mechanism which always gives the same distance between the cutterblock and the table**. The system operating directly on the connecting rods avoids any exertion to the table assuring constant planarity over time.



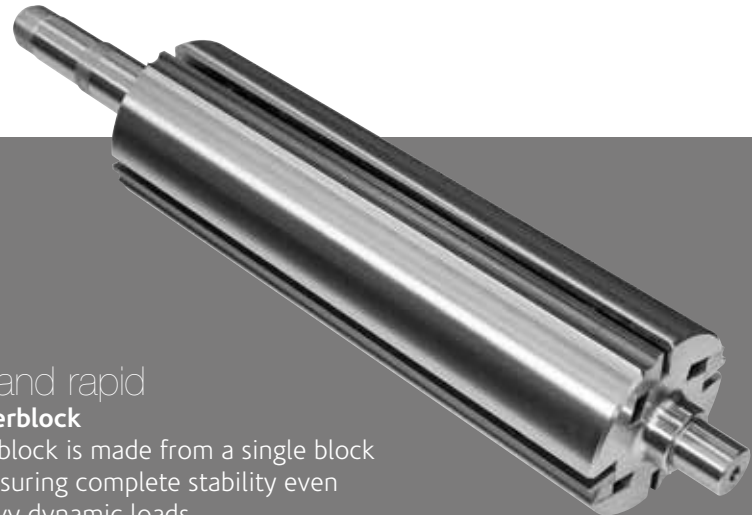
perfect finish

**Feeding rollers on connecting rods**

The stopping of the work-piece and the presence of notches on its surface are eliminated due to the movement system on all three rollers, that allows their vertical displacement by rotation and **the best linear feeding**. Perfect surfaces and high feeding performance with the standard rubber rollers.



solutions for every requirement  
**Interchangeable rollers**  
**Perfect finish obtained by quick and easy changeover of the rollers** that allows the operator to configure the machine drive function in case of special requirements, such as a minimum removal of fine wood and/or batches where multiple pieces of different thicknesses are processed.  
*(third powered roller available as option)*



simple and rapid  
**SCM cutterblock**

The cutterblock is made from a single block of steel ensuring complete stability even under heavy dynamic loads.

Powered worktable lifting with micrometric adjustment.

The 4 screws with a large diameter combined with the 2 side linear guides ensure worktable stability. The integrated protections guarantee high precision and reliability over time.



# planers main optional devices



## "Tersa" monoblock cutterblock

The cutterblock is made from a single block of steel ensuring complete stability even under heavy dynamic loads. Automatic knives clamping by means of the centrifugal force ensures safe and precise machining. The system, without fixing screws, makes knives substitution extremely fast.



## "Xylent" spiralknife cutterblock

The 3 spiralknives give an exceptional finish.

**Reduced noise** during machining provides a more comfortable working environment.

It also improves the dust extraction due to the **production of very small chips**.

Each cutter has 4 tips which can be rotated into the cutting position when worn.

Therefore, increasing the production life of the cutter block **before knives** require replacement.



## Maintenance case for "Xylent" spiralknife cutterblock

It includes:

- 1 cleaning/degreasing liquid bottle for the resins cleaning
- 1 set dynamometric key
- 2 bit Torx
- 10 inserts
- 5 screws
- 1 brass bristle brush to clean the spindle with mounted in inserts
- 1 steel bristle brush to clean the inserts housings



**Thickening table extension  
to be used in infeed  
or outfeed**

It can be installed on the  
worktable end side.



**Additional overturning fence**

Integrated in the surface fence,  
it ensures perfect operator safety  
when machining small dimensioned  
work-pieces.



**Cast-iron mortiser**

Drilling holes and mortises are easily  
carried out. It includes the exhaust hood,  
120 mm diameter and 16 mm chuck.

**Sectioned steel roller**  
It allows the simultaneous processing of  
different thicknesses giving great results  
even with minimum removal.



**Thickening table with idle rollers**

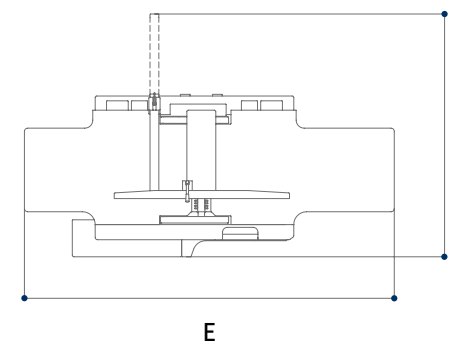
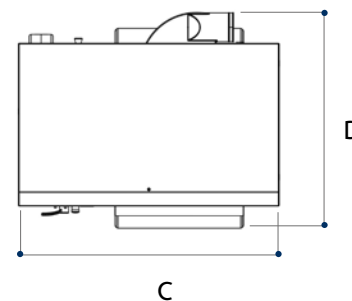
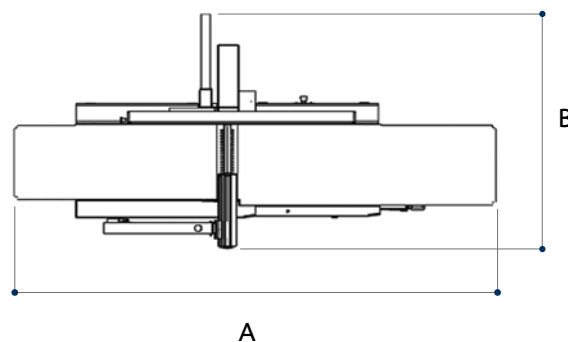
It enables the feeding of moist and/or  
resinous wood. Particularly suitable for  
heavy duty woodworking operations  
and with rough work-pieces.

**Outfeed rollers in  
sandblasted steel**

For a perfect  
post-processing finish.



# planers technical data



S Standard  
O Option

TECHNICAL DATA		nova f 520	nova f 410	nova s 630	nova s 520	nova fs 520	nova fs 410
Working width	mm	520	410	630	520	520	410
Cutterblock diameter/standard knives	mm/n.	120/4	120/4	120/4	120/4	120/4	95/4
Standard knives dimensions	mm	35 x 3 x 520	35 x 3 x 410	35 x 3 x 640	35 x 3 x 520	30 x 3 x 520	30 x 3 x 410
Max. stock removal	mm	8	8	8	8	5	5
Total worktable length	mm	2750	2610	-	-	2250	2200
Thickening table dimensions	mm	-	-	640 x 1000	530 x 900	520 x 850	410 x 775
Feed speed on thickener	m/min	-	-	5/8/12/18	5/8/12/18	5/8/12/18	6/12
Min. ÷ max. working height on thickener	mm	-	-	3,5 ÷ 300	3,5 ÷ 300	3,5 ÷ 240	3,5 ÷ 240
<b>other technical features</b>							
Three-phase motors 5 kW (6,6 hp) 50 Hz - 6 kW (8 hp) 60 Hz		S	S	-	S	-	S
Three-phase motors 7 kW (9,5 hp) 50 Hz - 8 kW (11 hp) 60 Hz		O	O	S	O	S	O
Three-phase motor 9 kW (12 hp) 50 Hz - 11 kW (15 hp) 60 Hz		-	-	O	-	O	-
Exhaust hood diameter	mm	120	120	150	150	120	120